

The **Romanoff RCS** and **Romanoff CCM Centrifugal Casting Machines** are capable of casting all precious metals and related alloys in a vacuum atmosphere with Optical Pyrometer temperature control up to 2000°C. These models are noted for their high melting efficiency and speed.

Romanoff RCS Centrifugal Casting Machines



Romanoff RCS Centrifugal Casting Machines are the most advanced universal casting machine on the market. The patented Rotating Coil System (RCS) not only provides excellent casting results, but can do so without rapid metal cool down due to the coil dropping prior to spinning.

Since the RCS coil spins during the casting cycle, the metal is under heat while transitioning from the crucible to the flasks. This ensures the metal is casted at the lowest possible temperature; an essential feature in avoiding a hot metal mold reaction that can lead to surface porosity.

The RCS machines are available in semi-automatic (79-7100) and fully automatic (79-700).

The fully automatic (79-700) has an optional Dual Color Infrared Pyrometer (79-700-DP) that will automatically compensate for emissivity variations. This extremely accurate casting temperature control system is designed for molten metals that fluctuate with high and low emissivity such as copper.

Features:

- Built in vacuum pump and Argon gas circuit
- Coil rotation with arm and flask
- Coil still heating during rotation
- Metal injected in liquid phase
- Optical temperature reader
- Metal emissivity regulation
- Vacuum-Argon washing cycle
- Built in water recirculator system

Romanoff CCM Centrifugal Casting Machines



Romanoff CCM Centrifugal Casting Machines are perfect for high volume jewelry manufacturers with demanding requirements.

Our machines are capable of melting under vacuum and allow the operator to introduce argon or any other inert gas as needed to protect the alloy during the melting and casting process.

Features:

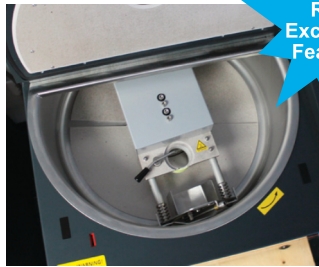
- New heavy duty generator
- Easy to use digital control panel
- Metal emissivity regulation
- Optical temperature reader
- Excellent heating cycle control
- Built in 20 m3 vacuum pump
- Inert (Argon or Nitrogen) gas circuit
- 20 user programs with 10 programmable parameters

Key Machine Features and Accessories



Advanced LCD Control Panel

Standard feature on:
79-700, 79-500-D1 and 79-500-D2



Rotating Coil System

No rapid metal cool-down,
Low temperature casts,
Excellent results.



Dual Spectrum Pyrometer

Put emissivity compensation
on autopilot!
(Optional for all models)



Large Flask Capacity

Accepts the following flask sizes:
100 x 120 mm and up to 120 x 160 mm
(79-500-D1 and 79-500-D2)

	ROMANOFF RCS LITE 4KW (79-7100)	ROMANOFF RCS KW (79-700)	ROMANOFF CCM200 (79-500-D1)	ROMANOFF CCM400 (79-500-D2)
Absorbed Power KW (max)	4.0	5.0	7.5	
Output Frequency kHz	60-105		50-80	50-80
Power / Line Phase 50/60hz	220 V / 1 Ph		220 V / 3 Ph (Optional) +/-10% & 380 V / 3 Ph (Standard) +/-10%	
Crucible Capacity	200g Pt, 170g Au	200g Pt, 170g Au	350g Pt, 290g Au	750g Pt, 650g Au
Crucible Dia. & Part Numbers	Gold: 44 mm (SKU: 79-702) Platinum: 44 mm (SKU: 79-701-LG)		Gold: 51 mm (SKU: 79-452) Platinum: 44 mm (SKU: 78-0060)	Customizable
Flask Size mm (max)	D = 80 x H = 75	D = 80 x H = 75	D = 100 x H = 120	D = 120 x H = 160
Operation	Semi-Automatic	Automatic	Automatic	Automatic
LCD Control Panel	No	Yes	Yes	Yes
Programs	1		20	
Dimensions (L x W x H)	25.2 x 26.4 x 41.3 in (640 x 670 x 1050 mm)	25.2 x 26.4 x 41.3 in (640 x 670 x 1050 mm)	27.6 x 30 x 43.5 in (701 x 762 x 1105 mm)	35.8 x 40.6 x 43.5 in (910 x 1030 x 1105 mm)
Weight	342 lbs (155 kg)	342 lbs (155 kg)	551.1 lbs (250 kg)	684.4 lbs (310 kg)



NATIONWIDE

With offices across the United States, we can ensure you receive top level support from coast to coast.



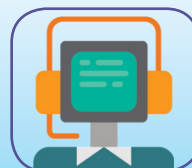
FINANCING

We can work together to get you the capital for your business and on terms that suit your needs.



SERVICE

Our Certified Technicians provide the highest level of customer satisfaction in our industry.



SUPPORT

Our technical support team is always available for remote as well as on-site training and maintenance.