

Converting Vacuvest 10, 12 and 15 machines built before January 2020 to the new style pouring valves.

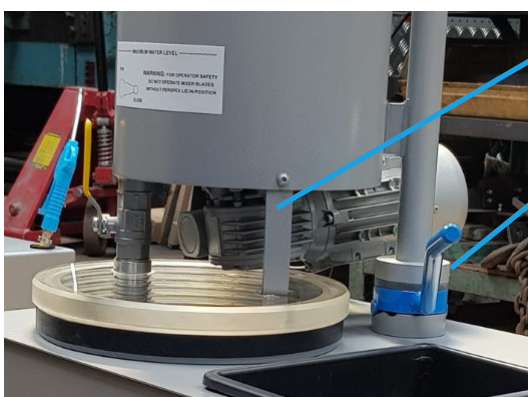
The Conversion process on Vacuvest 10, 12 and 15 machines is very straight forward. The new taps are longer so than previous valves. It's therefore necessary to make an adjustment to accommodate for the extra length.

First thing we advise is to put a spacer under the handle as shown in figure 1 to lift the top tank assembly and give a gap between the top of the flask chamber and the perspex lid.

Fit the new style valves now exactly as you would have previously with the old version.

With the pouring valves being longer than previous its necessary to either file a slot in the perspex support brackets or drill a new hole in the tank assembly to suit the longer length. It is also possible to purchase a new bracket with a long slotted hole that can be cut and drilled to suit the perspex lid. This can make the conversion easier but isnt a necessity.

The final adjustment is the position of the locking collar on the mixing chamber swivel pipe. When the tank is lowered down onto the flask chamber the collar will be roughly 10mm above the handle. The 2 screws in the locking collar need to be unscrewed, the collar can then be knocked down until it touches the lift handle and then the bolts re tightened.



Perspex support bracket

Locking collar



Figure 1 showing block used to lift the mixing chamber up