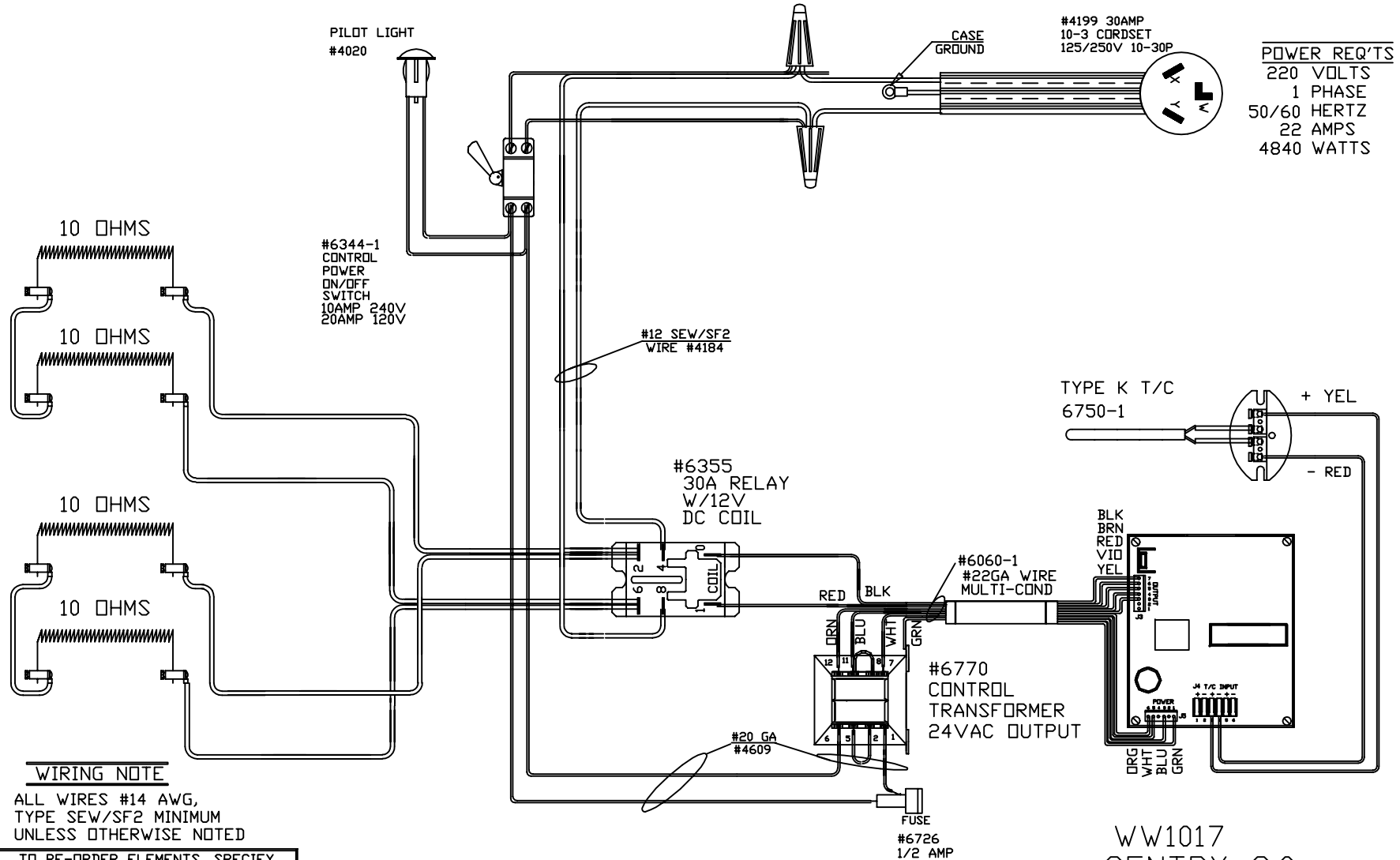


PART NO W18-3



**POWER REQ'TS**  
 220 VOLTS  
 1 PHASE  
 50/60 HERTZ  
 22 AMPS  
 4840 WATTS

**WIRING NOTE**

ALL WIRES #14 AWG,  
 TYPE SEW/SF2 MINIMUM  
 UNLESS OTHERWISE NOTED

TO RE-ORDER ELEMENTS, SPECIFY		
DESCRIPTION	QTY	LOC
ELW18-3	4	SIDES

WW1017  
 SENTRY 2.0

IC  
 STAINLESS  
 STEEL CASE

1700° F

REV	DATE	BY	DESCRIPTION
-	9/24/02	DTB	

SWITCH BOX ASSY- 42035-1

Romanoff International Supply Corp.  
 9 DeForest St.  
 Amityville NY, 11701

**WIRING DIAGRAM**

240V 1 PHASE 60HZ 4840WATTS

PART NO	REV
W18-3	-
181818	FILE